

# Owners Manual

Product Code: 1217T

**MADE FOR THE  
TRADE**

**TQ TRADEQUIP**  
the trusted brand in equipment

**INFA-RED  
THERMOMETER**



#### Specifications:

- Temperature Range: -50°C to 700°C
- Accuracy: + 1%
- Distance Spot Ratio: 12:1
- Emissivity: 0.10~1.00 adjustable
- Resolution: 0.1C
- Wave Length & Response Time: (8-14) um & 500ms
- Repeatability: + 1%
- Weight: 680g

**FOR INDUSTRIAL AND AUTOMOTIVE APPLICATION ONLY**

#### About the Tradequip brand

The 'Tradequip' brand of workshop equipment, is designed for use in a demanding workshop environment by professional users. With proven and trusted "Made for the Trade" reliability, 'Tradequip' branded products offer the very best in performance for an affordable price. All backed by a 1year trade guarantee across 1,000+ distributors Australia wide.

**TQ TRADEQUIP**  
the trusted brand in equipment

**TQPRO**  
Trusted by serious professionals

**BORUM**  
INDUSTRIAL WORKSHOP EQUIPMENT

**WARNING**

**IMPORTANT: READ ALL INSTRUCTIONS BEFORE USE**



**WARNING**

The instructions and warnings contained in this manual should be read and understood before using or operating this equipment. Do not allow anyone to use or operate this equipment until they have read this manual and have developed a thorough understanding of how this equipment works. Failure to observe any of the instructions contained in the manual could result in severe personal injury to the user or bystanders, or cause damage to the equipment and property. Keep this manual in a convenient and safe place for future reference.

Whilst every effort has been made to ensure accuracy of information contained in this manual, the TQB Brands Pty Ltd policy of continuous improvement determines the right to make modifications without prior warning.

**CONTENT**

WARNING .....2

CONTENT .....2

SAFETY INSTRUCTIONS .....3

ASSEMBLY, OPERATION, PREVENTITIVE MAINTENANCE.....4

WARRANTY .....7

**INTENDED USE:**

For Industrial and Automotive application only. Not suitable for Human or Animal use.

**SAFETY INSTRUCTIONS****SAFETY OPERATING INSTRUCTIONS**

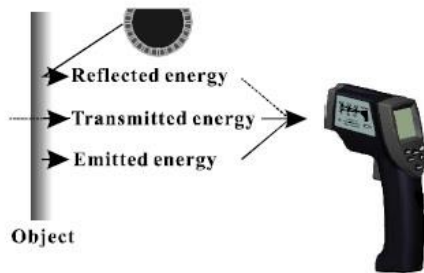
- FOR INDUSTRIAL AND AUTOMOTIVE APPLICATION ONLY
- Infrared thermometers should be protected from EMF (electro-magnetic fields) from arc welders, induction heaters etc.
- Protect from thermal shock (caused by large or abrupt ambient temperature changes) allow 30 minutes for the unit to stabilise itself before use.
- Ensure unit is protected from static electricity.
- Viewing the laser pointer output with certain optical instruments (eg: eye loupes, magnifiers and microscopes) with a distance of 100mm may pose an eye hazard.
- Viewing the laser pointer output with certain optical instruments (eg: telescopes and binoculars) may pose an eye hazard.
- Do not stare into beam or direct the beam towards another person's eyes.
- Do not direct the beam onto reflective surfaces.
- Avoid positioning the laser such that it may lead to unintentional eye exposure to any potential passing pedestrians/traffic.
- Always switch off when not in use and do not leave unattended. Remove the batteries before storing the infrared thermometer.
- Care must be taken to ensure that the infrared thermometer is not dropped, knocked or damaged during use or storage.
- Only use this device for the purpose for which it has been designed.
- This infrared thermometer product has no serviceable parts. Do not attempt to disassemble or repair.
- Use the right product for the job. There are certain applications for which the Infrared Thermometer was designed. Do not modify the Infrared Thermometer and do not use the Infrared Thermometer for a purpose for which it was not intended.



## ASSEMBLY, OPERATION, PREVENTITIVE MAINTENANCE

### 1. FEATURES

The TradeQuip infrared thermometer is compact, rugged and easy to use. Just aim and push the button to read the temperature of the objects surface, which is applicable for various hot, cold, hazardous and hard to reach objects without contact safely and quickly. The information is then displayed on the screen display.



### 2. ASSEMBLY

**Unpacking:** Carefully remove the infrared thermometer from the packaging and examine it for any sign of damage. Check the contents against the parts shown below. If after removing the packing material, make sure the product is in perfect condition and that there are no visible damaged parts. The packaging materials (Polyethylene bags, polystyrene etc.), must be disposed of in an appropriate refuse collection container. These materials must not be left within the reach of children as they are potential sources of danger.

### 3. BEFORE USE

Prior to each use conduct a visual inspection by checking for abnormal conditions, such as cracked joins and damaged, loose, or missing parts.

#### 9v Battery Installation:

To install the battery press battery door clip, pull down and forward to open door. Install 9v battery.

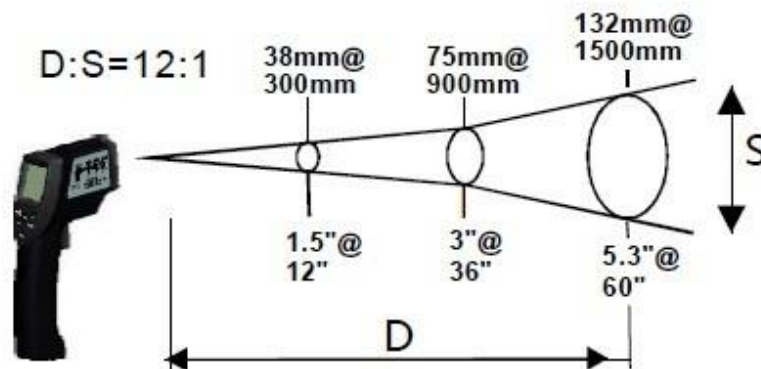
#### Celsius/Fahrenheit:

Open battery door and push the slide switch to Celsius.



#### 4. OPERATION

When taking measurements, pay attention to the Distance to Spot ratio. As the Distance (D) from the target surface increases, the Spot ratio (S) of the area measured by the unit becomes larger. The Distance to Spot ratio of the unit is 12:1. This unit is equipped with a laser pointer, which is used for aiming.



##### Field of view:

Make sure the target is larger than the unit's Spot ratio. The smaller the target the closer the measuring distance. When accuracy is critical, make sure the target is at least twice as large as the Spot ratio.

##### Emissivity:

Most organic materials and painted or oxidized surfaces have an emissivity of 0.95 (pre-set in unit). Inaccurate readings will result from measuring shiny or polished metal surfaces. To compensate, cover the target surface with masking tape or flat black paint. Measure the tape or painted surface when the tape or painted area reach the same temperature as the material underneath.

##### Operating the Unit

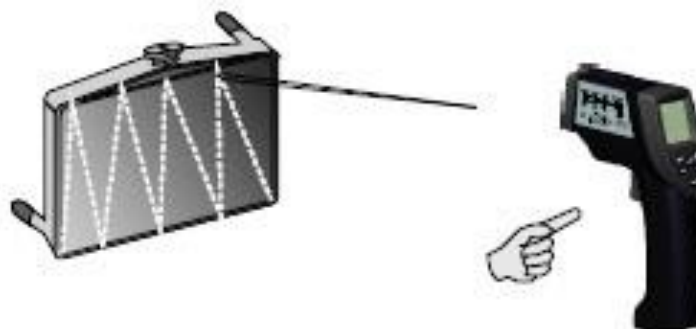
Pull the trigger to turn on the unit.

Aim at the target surface and pull the trigger, the temperature will be shown on the LCD.

This unit is equipped with a laser pointer, which is only used for aiming.

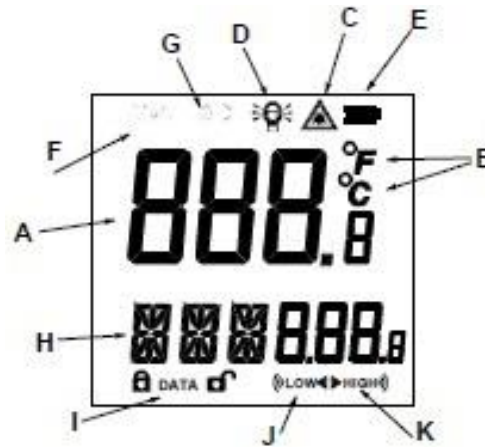
##### Locating a Hot Spot

To find a hot spot, aim the thermometer outside the area of interest, and then scan across with an up and down motion until you locate the hot or cold spot.

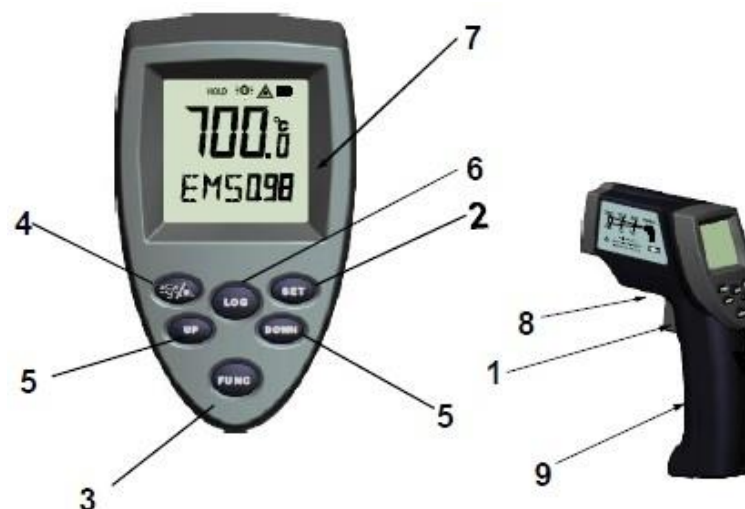


**LCD display:**

- A. Measuring reading
- B. Measuring unit
- C. Laser on icon
- D. Back light on icon
- E. Battery power icon
- F. Scanning icon
- G. Data hold icon
- H. Mode/emissivity indicator
- I. Data storage / read icon
- J. Low temperature alarm icon
- K. High temperature alarm icon



1.	Trigger	Turns on LCD and displays VERXX software version for 1 second. Release the trigger to display reading with HOLD icon.
2.	Set	Press to turn back light on when back light is turned on; any operations will remain backlit for 10 seconds.
3.	Function	Press to access MAX-MIN-DIF-AVG-HAL-LAL-STO functions in normal measuring mode MAX: measuring maximum temperature press key 4 to enter. MIN: measuring minimum temperature DIF: difference between current max and min reading. AVG: measuring average temperature HAL: sets high temperature alarm, press key 5 to set high temperature alarm trigger and confirmed by pressing key 4. LAL: sets low temperature alarm, press 5 keys to set low temperature alarm trigger and confirmed by pressing key 4. STO: data storage--when STO selected, lock & DATA & 1---indicator will shown when press key 4. After temperature read out press key 6 to store, then 2---memory unit will be shown. There —100 groups memory unit available. To recall the stored data in normal measuring mode by pressing key 6, remove all data by holding key 6 for 3 seconds. H. EMS: Emissivity setup-- press key 5 for emissivity settings, press key 4 to save setup and back to normal status.
4.	Alarm	Confirms temperature settings and saves emissivity settings.
5.	Up/Down	Sets temperature alarm settings.
6.	Log	Stores temperatures to 100 memory groups.



## 5. STORAGE

This Infrared thermometer should always be stored in a dry location on a level surface between -20°C to 50°C. Always switch off and remove batteries before storage. Care must be taken to ensure that the infrared thermometer is not dropped, knocked or damaged during storage.

## 6. MAINTENANCE

- Do not attempt to dry the thermometer by fire or with an electric dryer.
- Do not drop the thermometer, avoid rough treatment, and avoid constant vibration.
- Clean with a soft cloth, slightly dampened with a water solution.
- Do not use harsh chemicals, cleaning solvents or strong detergents.
- Keep the laser pointer aperture of the thermometer clean by wiping it gently with a soft lint-free cloth.
- Remove batteries from the thermometer prior to storage.

## 7. SERVICE & REPAIR

Any Infrared Thermometer found damaged in any way, or found to be worn or operates abnormally should be removed from service until repaired by an authorised service agent. Owners and / or operators should be aware that repair of this product requires specialised equipment and knowledge. Only authorised parts, labels and decals shall be used on this equipment. Annual inspection of the Infrared Thermometer is recommended and can be made by an authorised repair facility to ensure that your equipment is in optimum condition and that the equipment has the correct decals and safety labels specified by the manufacturer.

## WARRANTY

Tradequip products have been carefully tested and inspected before shipment and are guaranteed to be free from defective materials and workmanship for a period of 12 months from the date of purchase except where tools are hired out when the guarantee period is ninety days from the date of purchase.

Should this piece of equipment develop any fault, please return the complete tool to your nearest authorised warranty repair agent or contact TQB Brands Pty Ltd Warranty team – [warranty@tqbbrands.com.au](mailto:warranty@tqbbrands.com.au).

If upon inspection it is found that the fault occurring is due to defective materials or workmanship, repairs will be carried out free of charge. This guarantee does not apply to normal wear and tear, nor does it cover any damage caused by misuse, careless or unsafe handling, alterations, accident, or repairs attempted or made by any personnel other than the authorised TQB Brands Pty Ltd repair agent.

This guarantee applies in lieu of any other guarantee expressed or implied and variations of its terms are not authorised.

Your TQB Brands Pty Ltd guarantee is not effective unless you can produce upon request a dated receipt or invoice to verify your proof of purchase within the 12 month period.

### Consumer Guarantee

Our goods come with a guarantee that cannot be excluded under the Australian Consumer Law. You are entitled to a replacement or refund for a major failure and compensation for any other reasonably foreseeable loss or damage. You are also entitled to have the goods repaired or replaced if the goods fail to be of acceptable quality and the failure does not amount to a major failure.



All images and illustrations shown are for reference purposes only. All information, specifications and illustrations in this manual are based on the latest information available at the time of publication and are subject to change without notice. The information in this manual is periodically revised to ensure the latest information is included. Download the latest version of this manual and other related technical documentation from [www.tqbbrands.com.au](http://www.tqbbrands.com.au).